

# CASEOUS LYMPHADENITIS (CL)

By: Alexis Wright

# WHAT IS CL?

- ⦿ Highly contagious BACTERIAL disease that effects both sheep and goats
- ⦿ Abscesses that form in the skin, internal and external lymph nodes, and in organs
- ⦿ Microorganism called - *Corynebacterium pseudotuberculosis*



# SIGNS

- Presence of an external abscess
  - Internal abscess' can only be determined through necropsy.
- Sheep are more prone to internal abscess'
- Goats are more prone to external abscess



# DIAGNOSIS OF CL ABSCESS

- ◉ Soft to firm swelling
- ◉ Abscess contains thick, yellow-green pus with foul odor
- ◉ Internal abscess's can only be found through X-rays, biopsy, etc.

# WHAT DO YOU DO?

- ◉ Immediately isolate animal from herd before abscess busts in the field on its own
- ◉ If the abscess has lost all it's hair, it is about to bust



# WHAT DO YOU DO?

- Make an incision to drain abscess



# WHAT DO YOU DO?

- ◉ Completely drain abscess
- ◉ Rinse with hydrogen peroxide then flush through it with iodine



# WHAT DO YOU DO?

- ◉ Wash the abscess cavity
- ◉ Keep animal isolated until completely healed





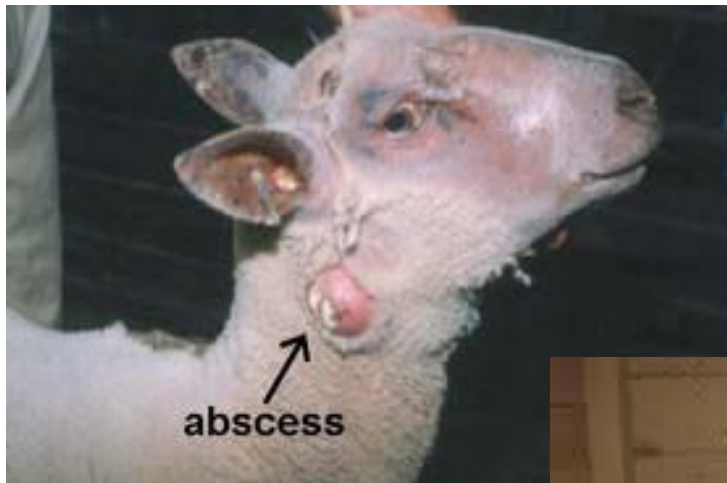
# PREVENTING CL

## ⦿ Good management

- Routinely examine your herd
- Use clean needles
- Don not give injections in the shoulder
- Disinfect equipment

## ⦿ No effective antibiotics

- Vaccines but mainly only labeled for sheep



- ◉ <http://www.aces.edu/pubs/docs/U/UNP-0085/>